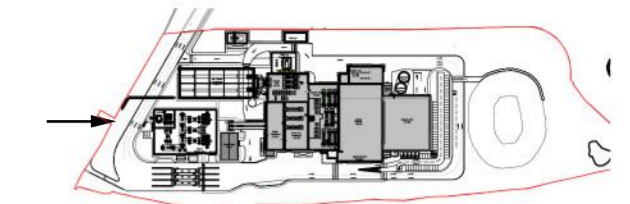


Key:

- A. Horizontally laid Sinusoidal profile insulated built-up cladding with Colorcoat HPS200® Ultra coating - Colour 'Terracotta' (matt finish) / RAL 040 40 40
 - B. Horizontally laid microrib profile insulated cladding panel with Colorcoat HPS200® Ultra coating - Colour 'Albatross' / RAL 240 80 05
 - C. Horizontally laid microrib profile insulated cladding panel with Colorcoat HPS200® Ultra coating, 1000mm deep bands - Colours random mixture 'Terracotta' (matt finish) RAL 040 40 40/ Merlin Grey RAL 180 40 05/ Anthracite (matt finish) RAL 7016/ Hamlet RAL 9002
 - D. Vertically laid Trapezoidal profile insulated cladding panel with Colorcoat HPS200® Ultra coating - Colour 'Anthracite' (matt finish) / RAL 7016
 - E. Stack - Colour 'Light Grey' / RAL 7035
 - F. Horizontally laid microrib profile cladding sheet with Colorcoat HPS200® Ultra coating, 1000mm deep bands - Colours random mixture 'Terracotta' (matt finish) RAL 040 40 40/ Merlin Grey RAL 180 40 05/ Anthracite (matt finish) RAL 7016/ Hamlet RAL 9002
 - G. Horizontally laid microrib profile insulated cladding panel with Colorcoat HPS200® Ultra coating - Colour 'Terracotta' (matt finish) / RAL 180 40 05
 - H. Aluminium Louvres to be PPC colour Merlin Grey RAL 180 40 05 / Anthracite (matt finish) RAL 7016
- Polyester powder coated aluminium window frames - Colour 'Anthracite' (matt finish) / RAL 7016
- Metal external handrails and plant support - Galvanised finish.
- Paladin fencing and gates - Colour 'Anthracite' (matt finish) / RAL 7016

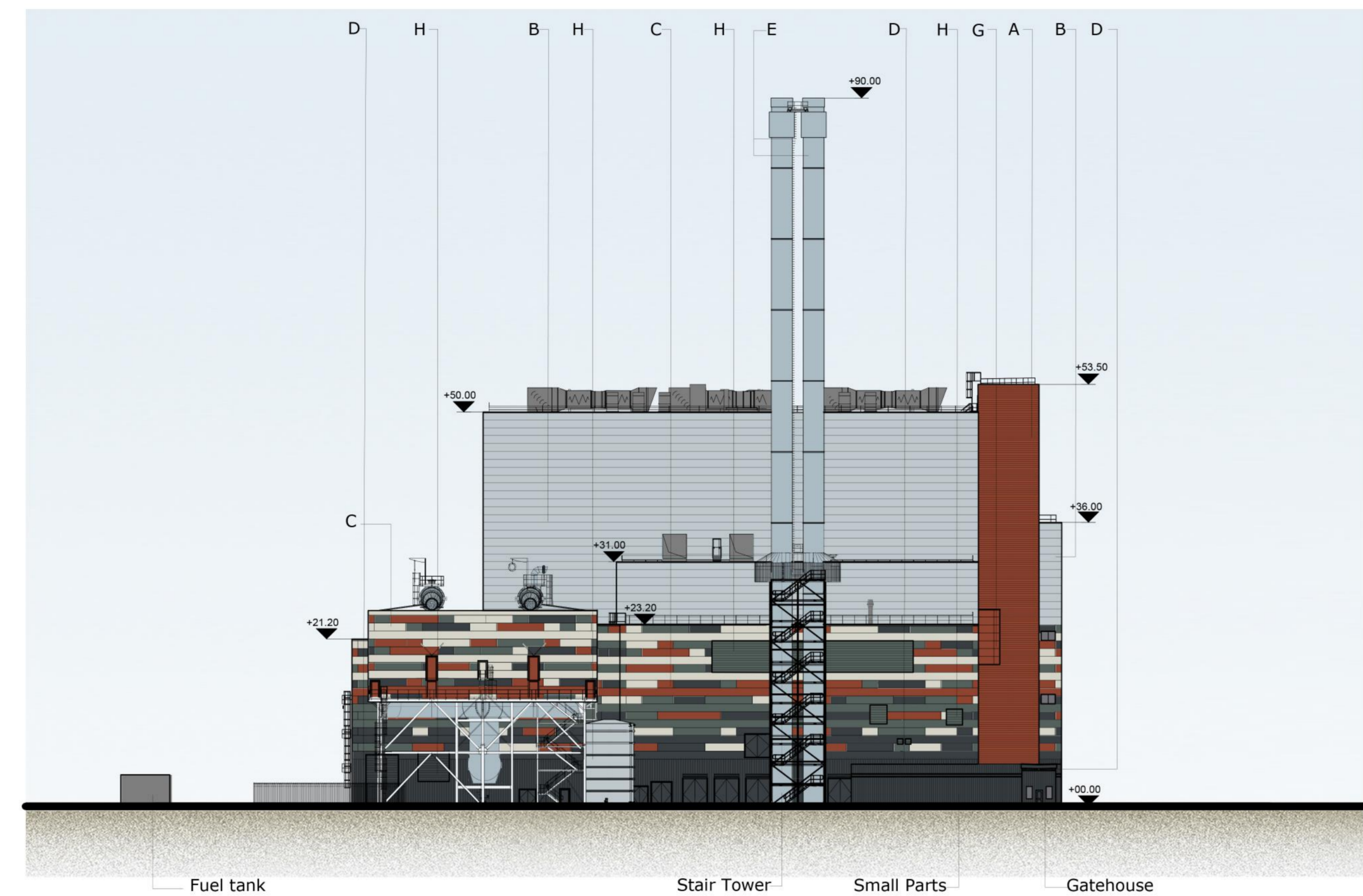
notes :

1. If this drawing has been received electronically it is the recipient's responsibility to print the document to the correct scale.
2. All dimensions are in millimetres unless stated otherwise. It is recommended that information is not scaled off this drawing.
3. This drawing should be read in conjunction with all other relevant drawings and specifications.
4. Information based on drawing reference: 15015 F004.



Key Plan
Scale @ 1:7000

Drawing for **PLANNING** purposes only



South West Elevation
Scale 1:500

U	Gatehouse and rainwater tank added, site plan updated.	BC	TFH	12.09.18
T	Drawing revised and updated to show M&E equipment	PBR	TFH	04.07.18
S	ACC cladding amended.	JT	CMGD	13.02.17
R	Client logos updated. Steam export rack updated as per CHIM drawing. Key updated. Raw Water Tank added. Industrial Waste Water Pit removed. Walkway enclosure added. Fuel Tank added. ACC cladding amended.	JT	CMGD	13.02.17
P	Scale changed.	JH	CD	19.01.17
O	Elevations updated to suit 2016 NMA site plan layout.	DDP	CD	03.01.17
N	Updated to suit current site layout received from EPC contractor	AE	JAT	17.11.15
M	Updated as per client comments 26.10.15.	MK	JAT	28.10.15
L	Updated to suit current building layout received from EPC contractor	DEC	JAT	20.10.15
K	Logo's updated	LMA	ST	02.08.13
J	Elevations updated. Logo's updated.	AJL	RS	10.07.13
H	Elevation amended to suit comments.	JAT	SG	12.10.12
G	Elevation information, title block and key updated	JAT	SG	08.10.12
F	E.ON logo added. Building extents clarified.	KRY	PRP	15.02.10
E	Stack colour reference amended. UMA extents confirmed.	AJL	PRP	18.01.10
D	Key updated and minor amendments to drawing.	SMG	PRP	17.12.09
C	Building levels information clarified. Key updated. Stack material indicated.	AJL	PRP	25.11.09
B	Key & materials information added.	AJL	PRP	23.11.09
A	Key added. Keyplan Updated. Building Elements Labelled.	AJL	PRP	19.11.09

rev	amendments	by	ckd	date
-----	------------	----	-----	------



Sherwood House
Sherwood Avenue
Newark, Nottinghamshire
NG24 1QQ

T +44 (0) 1636 605 700
F +44 (0) 1636 610 696
W www.rpsgroup.com
E rpnewark@rpsgroup.com



Client

Project **Kemsley Sustainable Energy Plant**

Title **South West Elevation**

Drawing Status	Date Created	Drawing Scale
Preliminary	11.11.09	1:250
Project Leader	Drawn By	Initial Review
AWY	SMG	RS

Drawing Number **16315 / A1 / P / 0112 U**

FIGURE 4.6D

